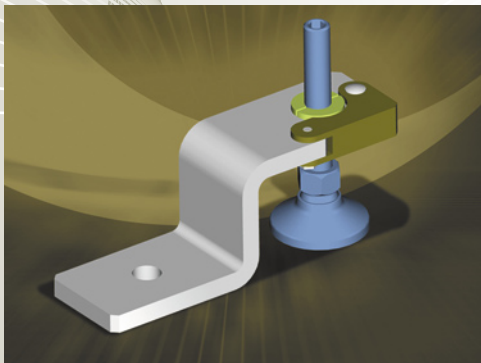


noVOCLAMP™

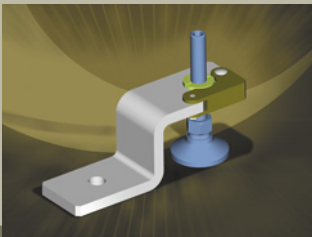
MODULAR SEISMIC/SHIPPING CLAMP

Less than a minute installation time
Stronger, more versatile, and
cleanroom compatible...



Flexible Modular Design | Less Space | Easy to Install

noVOCLAMP™ can be used to hold down any equipment or object with leveling feet. The split nut construction allows the user to install the clamp easily without lifting or disassembling the equipment.



novoCLAMP™

novoto

Flexible Modular Design | Less Space | Easy to Install

FEATURES

- >> **EASE OF INSTALLATION**

Does not require any special mounting provisions on the equipment. If there is a threaded leveling foot, it can be installed quickly.

Can be installed without loosening the floor anchor bolt. Equipment can be released and rolled back to the same location.

Split nut construction allows to be installed without lifting or disassembling the equipment.
- >> **COMPACT SIZE**

Does not require large swing space around the leveling foot.

Eliminates a common interference problem with a caster next to it.

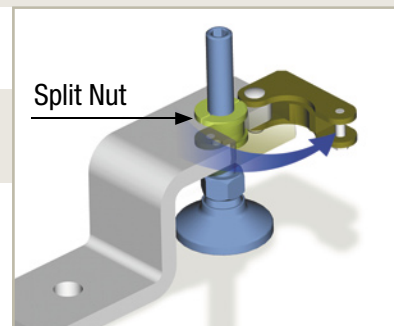
Narrow profile takes up less space than traditional brackets.
- >> **MODULAR DESIGN**

Modular design is flexible to adapt most thread sizes up to 3/4" or 20mm.

Available in both inch and metric.
- >> **MULTI-PURPOSE**

Can be used as a shipping clamp over and over.
- >> **CLEANROOM FINISH**

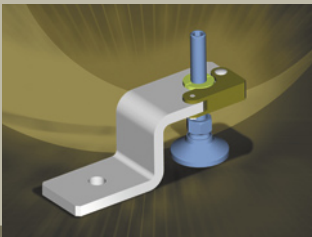
Nickel plated for cleanroom compatibility.



SPECIFICATION *

	novoCLAMP™ 100's Standard				novoCLAMP™ 200's Heavy Duty			
>> MAXIMUM MOMENT CAPACITY	1200 lbf-in (136 N-m)				2600 lbf-in (294 N-m)			
>> MAXIMUM LATERAL FORCE	Model 110	Model 120	Model 130	Model 140	Model 210	Model 220	Model 230	Model 240
	950 lbf (4225 N)	650 lbf (2891 N)	500 lbf (2224 N)	475 lbf (2113 N)	1600 lbf (7117 N)	1475 lbf (6561 N)	1150 lbf (5115 N)	1025 lbf (4559 N)
>> MAXIMUM VERTICAL FORCE	300 lbf (1334 N)				650 lbf (2891 N)			

* Numbers depend on anchors and subject to change without notice.



novotO CLAMP™

novotO

Flexible Modular Design | Less Space | Easy to Install

HOW TO ORDER

» Please use the table below to get the desired Part Number.



TYPE

1	Standard
2	Heavy Duty

HEIGHT/ STANDARD

1	1.3" (33 mm)
2	1.8" (46 mm)
3	2.3" (58 mm)
4	2.5" (64 mm)

HEIGHT/ HEAVY DUTY

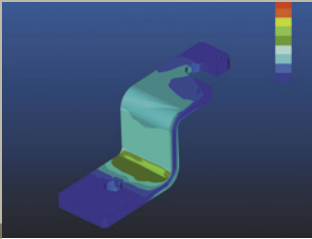
1	1.50" (38.1 mm)
2	1.75" (44.5 mm)
3	2.25" (57.2 mm)
4	2.50" (63.5 mm)

ONLY FOR SPECIAL ORDERS:
Special thread sizes, bracket height, finish, or others. Novoto can customize per your needs with no NRE charge.

DESIGNATOR | THREAD SIZE

1	5/16-18 UNC
2	3/8-16 UNC
3	1/2-13 UNC
4	5/8-11 UNC
5	3/4-10 UNC
6	M8 X 1.25
7	M10 X 1.5
8	M12 X 1.75
9	M16 X 2.0
10	M20 X 2.5

» Please contact Novoto if you have any questions.



novoCLAMP™

novoto

Flexible Modular Design | Less Space | Easy to Install

ENGINEERING SERVICES

Novoto can provide the detailed calculation package at a low cost. It includes calculation of all stresses in each part, safety factors, and anchorage check. Each calculation is done by a Novoto Qualified Professional Engineer and can be stamped. Your state may require a P.E. stamp from your own state. The calculation is done based on the Uniform Building Code, so it is valid in most states and countries around the world.

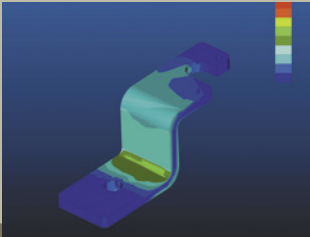
Novoto also makes sure the calculation satisfies the SEMI S2 standard, which must be provided for a third party S2 certification.

Please fill out the application form and e-mail to sales@novoto.com for a quote.

DISCLAIMER:

UNLESS THE CALCULATION IS CERTIFIED BY NOVOTO. NOVOTO IS NOT LIABLE FOR USING IMPROPERLY SIZED BRACKETS OR ANCHORS IN ANY WAY. IT IS SOLE RESPONSIBILITY OF THE USER.

SEISMIC BRACKET IS A VERY IMPORTANT SAFETY ITEM. PERSONAL SAFETY IS AT STAKE. SPECIAL ATTENTION IS REQUIRED FOR EQUIPMENT THAT CONTAINS HAZARDOUS MATERIAL. IF YOU DO NOT FEEL COMFORTABLE CALCULATING IT PROPERLY, IT IS STRONGLY RECOMMENDED TO CONTACT NOVOTO OR A P.E. THAT IS QUALIFIED TO DO SO.



novoCLAMP™

novoto

Flexible Modular Design | Less Space | Easy to Install

APPLICATION FORM

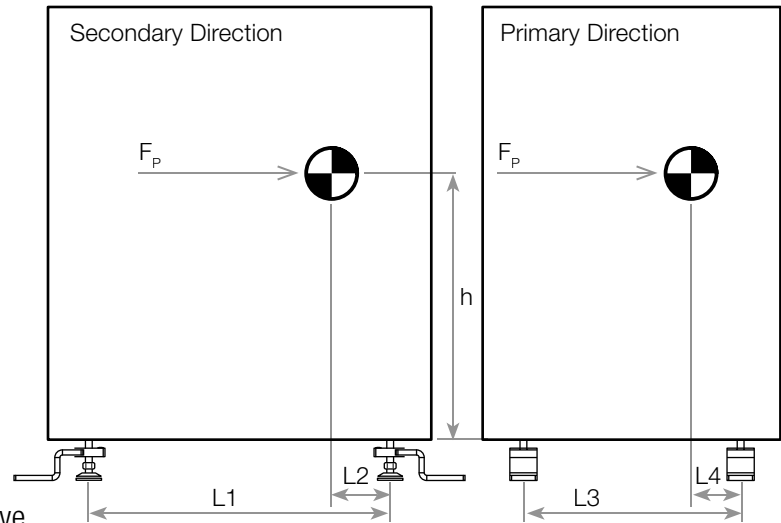
NAME _____

COMPANY _____

PHONE _____

EMAIL _____

This is the most common and basic configuration. For all other configurations with other attachment points, please call Novoto.



STEP 1: Indicate your configuration

- Standard configuration shown above.
- Non standard configuration.
- ◆ Please send in the exact configuration showing the location of all attachment points, external forces, and constraints along with a quote request.
 - ◆ Once a PO is received, the work will proceed immediately.

STEP 2: Please provide Novoto the following numbers;

1. Total weight/mass of the object (lbs/kg) = _____
2. h, Distance to the center of gravity from the floor (inch/mm)= _____
3. L1, Distance between two leveling feet (Inch/mm)= _____
4. L2, Distance from the far side foot to the center of gravity (inch/mm)= _____
5. L3, Distance between two leveling feet (inch/mm)= _____
6. L4, Distance from the far side foot to the center of gravity (inch/mm)= _____
7. The equipment contains hazardous material. YES NO
8. Concrete slab application. YES NO

STEP 3: Please e-mail the completed form to sales@novoto.com.

If you prefer faxing the form, please fax the completed form to 512-233-0705.

The calculation is done based on the above numbers provided by the customer. If those numbers are not correct, the calculation will not be correct. It is the customer's sole responsibility to provide ACTUAL numbers to Novoto. Novoto will NOT be liable for improper use of the novoCLAMP products.