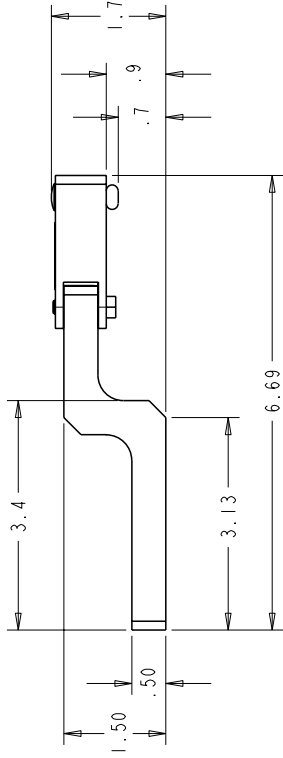
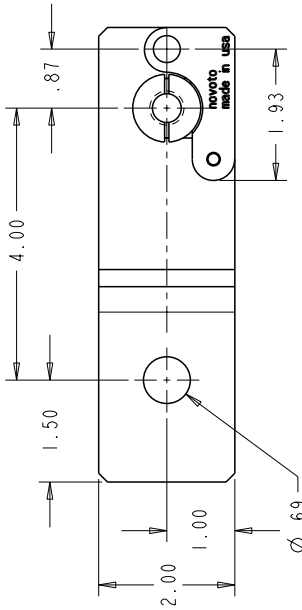
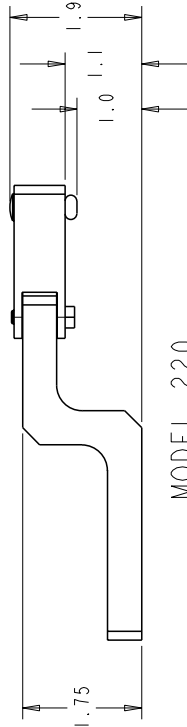


**NOVOTO CONFIDENTIAL STATEMENT**

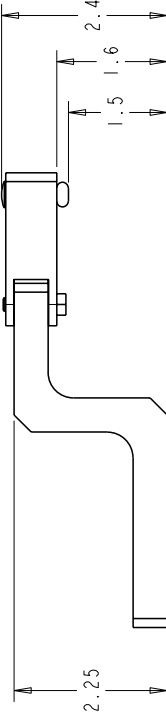
NOTICE TO ALL PERSONS RECEIVING THIS CONFIDENTIAL DRAWING: PERMISSION OF NOVOTO, INC. (AUSTIN, TEXAS) - THIS DRAWING IS ONLY CONDITIONALLY ISSUED AND NEITHER RECEIPT NOR POSSESSION OF THIS DRAWING CONSTITUTES AN IMPLICIT OR EXPLICIT WARRANTY OF MERCHANTABILITY OR FITNESS FOR ANY PURPOSE. NO PART OF THIS DRAWING IS TO BE REPRODUCED, COPIED, OR TRANSMITTED IN ANY FORM OR BY ANY MEANS, WITHOUT THE WRITTEN PERMISSION OF NOVOTO. PERMISSION IS GRANTED FOR COMPUTER AIDED DRAWING REPRODUCTION OF THIS DRAWING FOR THE EXCLUSIVE USE OF THE SUBJECT OF THIS DRAWING. NO OTHER REPRODUCTION OR TRANSMISSION OF THIS DRAWING IS GRANTED WITHOUT THE WRITTEN PERMISSION OF NOVOTO. PERMISSION IS GRANTED FOR COMPUTER AIDED DRAWING REPRODUCTION OF THIS DRAWING FOR THE EXCLUSIVE USE OF THE SUBJECT OF THIS DRAWING. NO OTHER REPRODUCTION OR TRANSMISSION OF THIS DRAWING IS GRANTED WITHOUT THE WRITTEN PERMISSION FROM THE COMPANY.



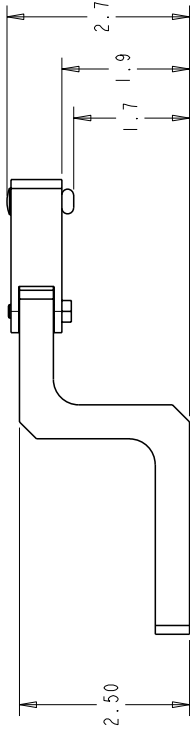
MODEL 210



MODEL 220



MODEL 230



MODEL 240

REV.	DESCRIPTION	REV BY	APPROVED	DATE
001	PROTOTYPE RELEASE	-	JHK	09/19/05

REVISIONS

THIRD ANGLE PROJECTION		APPROVALS JAE H. KIM 09/19/05 JHK 09/19/05	DATE 09/19/05
UNLESS OTHERWISE SPECIFIED DIMENSIONS ARE IN INCHES DECIMALS TO 3 PLACES ANGLES TO 0.5°		DRAWN JAE H. KIM 09/19/05	CHECKED JHK 09/19/05
MATERIAL SEE BOM		DESIGNED JAE H. KIM 09/10/05	SIZE DWG. NO. 9700-0011-OL
FINISH SEE NOTE		DRAWING PREPARED IN ACCORDANCE WITH ASME Y14.5M-1994	SCALE 0.750
CRITICAL INSPECTION POINTS REMOVE ALL BURRS AND BREAK ALL SHARP EDGES		DO NOT SCALE DRAWING	



www.novoto.com

ASSY  
 novotoCLAMP 200

REV. 001

SHEET 1 OF 1